

# BEER MATTERS



Available  
NOW!



*A Champion Beer from Sheffield*

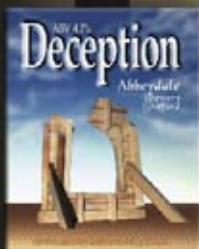
# DECEPTION

ABV 4.1%

*A pale beer, made with fabulous  
Nelson Sauvin hops.*

— ABBEYDALEBREWERY.CO.UK —

AWARD  
WINNING  
BEER



*There's nothing more social than  
beer! — Find us on*



UNTAPPD

## THE RISING SUN

471 FULWOOD ROAD, SHEFFIELD, S10 3QA. TEL. 0114 2303855

### COMMUNITY PUB

*Showcasing 13 cask ales plus craft  
keg beers and cider and coming  
soon fantastic homemade  
pub food!*



**RISING FOR WINTER 2015...**

**OPEN AS USUAL DURING THE RENOVATION!**



*There's nothing more  
social than beer!*

ABBEDALEBREWERY.CO.UK

UNTAPPD



**3,500 MONTHLY  
CIRCULATION**

## EDITOR

Andrew Cullen

07554 005 225

[beermatters@sheffieldcamra.org.uk](mailto:beermatters@sheffieldcamra.org.uk)

Articles, letters and suggestions  
are most welcome so please  
send them in\*

## DESIGN

Robin

[design@sheffieldcamra.org.uk](mailto:design@sheffieldcamra.org.uk)

## ADVERTISING

Alan Gibbons

[advertising@sheffieldcamra.org.uk](mailto:advertising@sheffieldcamra.org.uk)

Quarter Page £40

Half Page £60

Full Page £90

Back Cover £110

Discounts for regular placements

PDFs or high-res (300 dpi) bitmaps  
only please

Design from £30

Updates from £10

**NEXT COPY DEADLINE**  
**Friday 4 September 2015**

Opinions expressed are those of the author  
and may not represent those of CAMRA,  
the local branch or editor. Beer Matters is  
© CAMRA Ltd.

\*For legal reasons a full name and address  
must be provided with all contributions.

# THE FREE MAGAZINE OF CAMRA SHEFFIELD & DISTRICT

ISSUE 456

SEPTEMBER 2015

## NEWS

4

### BREWERY NEWS

6

Blue Bee, Sheffield Brewery Company, Steel City, Abbeydale, True North, Thornbridge, FuggleBunny Brewhouse, Exit 33, North Union Worksop & Retford



### PUB NEWS

14

Inn Brief  
Mitchell's Wine  
Hop Hideout



### AWARDS

18

Award Presentations  
Derbyshire Pub of the Year  
Champion Beer of Britain  
Pub of the Month



### TRIP REPORT

22

Barrow Hill volunteers wobble  
around Wakefield



### RESEARCH

24

Join the annual beer census pub  
crawls



### STEEL CITY 41ST

25

Volunteer at the Festival, Visit our  
Steel City Beer & Cider Festival



## FESTIVALS

28

## DIARY

32

## THE COMMITTEE

34



## TRAVEL NEWS

### GOOD BEER GUIDE 2016

The new edition of the national CAMRA Good Beer Guide book is due to be published this month and is the perfect buy – or Christmas gift for – the person that travels around the UK and wants to know where is recommended for good beer. It features the best pubs in each area, as selected by local CAMRA branches.

Additionally, unique to the Good Beer Guide,

it also features a section listing all the current breweries in Britain producing real ale with details of their regular beers.

Copies can be ordered through the CAMRA online shop (follow link from [www.camra.org.uk](http://www.camra.org.uk)) as well as the usual book outlets. Additionally we will have a limited stock to sell at our October branch meetings with a members discount.

Stagecoach Supertram are now back running normally following a summer of works to replace the track in a number of areas, to celebrate this along with the 21st anniversary of the tram system opening there are cheap fares being offered on the trams and the dedicated link buses to Stocksbridge, Stan-nington and Killamarsh - a maximum single fare of £1.70, day ticket at £3 and weekly ticket at £9.80. These offers run

from Saturday 29th August to Sunday 25th October. Additionally there is a £1 all day travel offer on Sundays in August with free car parking at park & ride sites also offered on those Sundays.

On the bus front a consultation on changes to the bus network took place during July, this is due to be implemented from 1st November - so advance warning - look out for the new routes, timetables and tickets coming soon!

# OLD Nº7

MARKET HILL, BARNSELEY. S70 2PX

OFFERING AN EXCITING RANGE OF CASK ALES,  
CONTINENTAL BEERS, PILSNERS AND CIDERS

 OldNo7Barnsley

 @OldNo7Barnsley

[WWW.ACORN-BREWERY.CO.UK](http://WWW.ACORN-BREWERY.CO.UK)



# THE FOREST FREEHOUSE

48 Rutland Street, Sheffield, S3 9PA. 07745 096699

## 6 Cask Ales *including from our local brewery* **TOOLMAKERS**

*Lynch Pin  
Blue Print  
Flange Noir  
Bow Saw*

*+ 2 rotating guest beers*

*1st Saturday each month all Toolmakers beers only £2.50 a pint  
courtesy of Toolmakers Brewery and The Forest*

Monday  
**FREE  
POOL**

Tuesday & Thursday  
**DARTS  
DOMINOES  
CRIB**

Friday  
**BUSKERS  
NIGHT**  
*singers/guitarists  
etc. welcome*

Saturday  
**LIVE**  
ENTERTAINMENT

Sunday  
**CARVERY**  
*served 12:30 - 3pm*  
**FREE QUIZ**  
*evenings*

Monday to Thursday **4 - 11.30pm**

Friday **3pm - late**

Saturday/Sunday **12noon - late**

*Gary and Norman welcome customers old and new*  
**10% discount on cask ales for card carrying CAMRA members**

**Functions catered for - please contact us with your requirements**



## Blue Bee

This month we have yet more specials available. The first of which is **Citra Fusion** 4.4% this American pale ale is jam packed with one of our favourite varieties of hops Citra, which impart plenty of citrus and passion fruit flavours. On top of this we have the slightly weaker **Amarillo Gold** 3.9% the perfect beer for the last of this year's summer sun, predominately hopped with American Amarillo this is sure to be a refreshing citrusy pale ale.

We are also looking forward to using yet more American Mosaic hops, continuing the theme we have **Attack of the Geek** 6.0% the plan will be to use four different malts to create a golden IPA with bags of grapefruit hop flavours and great bitter finish. On the cards as well is the return of **Ginger Beer** this time it will be slightly weaker at 4.5% but hopefully will have even bigger fiery ginger kick.



## Sheffield Brewery Company

### Brewing near Sheffield meets Made In Chelsea

Sat on the beach in St Ives, Pete's kids and Mrs said Andy from Made In Chelsea is on the beach selling "tees and sweats". Being one to support aspiring entrepreneurs, Pete bought a top and persuaded Andy we could perhaps help promote his business if he featured in Sheffield's *Beer Matters*. So here it is – can you spot the celeb!

### Name your own beer and be the brewer for a day

Ever wondered how your perfect pint is crafted? Learn how to brew beer with this deal from The Sheffield Brewery Company, and let the experts teach you a few of their tricks of the trade. You can book for one, two, three or up to four people at one time and enjoy a 'brewer for the day' experience.

- Your unique experience includes helping to mash the malts, prepare for the hop mash, and transfer to the fermenter.
- The experience begins at 8 a.m. and is hands-on right from the start, giving you the perfect opportunity to get stuck into the brewing process.
- You'll get the chance to work under the guidance of Dr Tim Stillman, who has almost 10 years' experience of commercial brewing as well as 40 years of home brewing.
- Lunch is included, from our favourite local sandwich shop, the Crusty Cob.
- That's not all. You'll also be invited to the next Beer Club event as an honorary member for the night, where you'll get to enjoy the beer you brewed. We'll even ask you to name the beer so you can see it on the pump clip at the event and you can show off the beer you brewed to your friends!

So if you're looking for an ideal gift or fancy it yourself just book by visiting the Living Social website at [www.living-social.com](http://www.living-social.com) and search brewery under Sheffield. It's really simple to do and all the prices and terms are on there.

## Steel City

Steel City have given the politics a break and gone back to their more usual music references with **The Light At The End Of The World** (a long-overdue My Dying Bride reference). This is a 'typical' Steel City Transatlantic Pale Ale, using Low Colour Maris Otter and a bit of Wheat Malt in the mash, with Columbus for bittering followed by Mosaic and Rakau for flavour and aroma.

As is becoming the norm, there will be a chilli version, in this case for Nottingham beer festival and named Death In Fire (from the Amon Amarth song, obviously, sure you're all familiar with it!). A bottled chilli version is also planned, **Her Ghost In The Fog** (Cradle of Filth this time), with a Ghost Pepper in every bottle!

The next collaboration is 'away' at Landlocked in Ripley. Details still to be confirmed, but Dave is rather happy at the prospect of finally getting to brew a sour beer (being a cuckoo brewer, their hosts probably wouldn't thank them for introducing lactobacillus and brettanomyces to the brewery!). The 'base' beer, working title **Stone Sour**, is a pale greengage sour, then numerous variants are planned with different fruits. At least a couple of variants will be available at the Steel City beer festival in October, and hopefully also at Wakefield beer festival the weekend before.

# THE BEER ENGINE

---

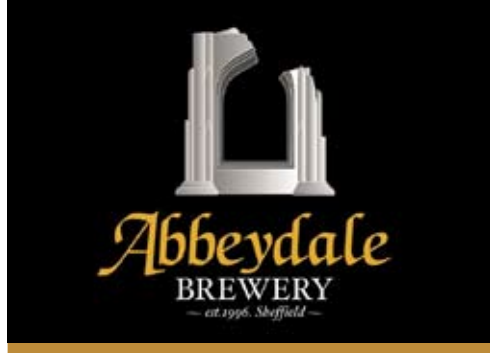
CRAFT BEERS  
SPIRITS  
FOOD

---

17 CEMETERY RD

---

NOW OPEN!



## Abbeydale

First up, we very happy to announce that we managed to raise over £2,250 for JBMF over SunFest, so thank you once again for your support. Anyone that managed to make it down to GBBF in London, we hope you enjoyed the Belfry we had available! Talking of beer festivals check out the advert for the first Devonshire Cat Beer Festival 1st-4th October. We will be centring the cask offering around UK hops - really showing off what they can do so keep your eyes peeled for some fantastic beers available over the weekend! Also you may have started to notice the beer mats for the Steel City Beer Festival out and about the city, we hope to see you there next month!

Talking of beer festivals check out the advert for the first Devonshire Cat Beer Festival 1st-4th October. We will be centring the cask offering around UK hops - really showing off what they can do so keep your eyes peeled for some fantastic beers available over the weekend! "CAT-FEST 2015" will be creating and spreading awareness for the Blind Veterans

UK charity, Sheffield contingent & proceeds for 1 special cask in the beer festival will be donated to their cause. Further information can be found at [blindveterans.org.uk](http://blindveterans.org.uk) or on [facebook.com/blindveteransuk](https://facebook.com/blindveteransuk)

Now onto the beer! September sees the first appearance of **Dr Morton's Transfers for China**, a 4.1% hoppy pale, featuring the Australian hops Galaxy and Vic Secret. Bold tropical and citrus fruit flavours come to the fore couple with a lasting bitter finish.

In a nod to the start of the Rugby World Cup that is about to start in a few weeks, we will launch the latest in our British hop Albion series, with **Elgar** featuring Minstrel hops. At 4.2% this session pale will showcase this lovely British hop that gives a herbal aroma with hints of orange and spiced berries on the palate.

There should also be another Signature series beer launched before the return of **Dr Morton's Chicken Vindaloo** towards the end of the month!



## True North

After brewing out of a few different local breweries for the past couple of years, exciting times are ahead for True North Brewing Co. We have recently purchased our own 10bbl kit and last week picked up the keys to our new city centre brewery site which will both house the Brewery and Tap House.

Earlier this year we were joined by new head brewer Bob Phaff, who returned to Sheffield after running his own award winning Scottish Brewery.

We recently launched 6 core range beers as well as collaboration brews with Thornbridge Brewery and Black Iris Brewery. As well as brewing the official Tramlines Festival Ale, Tramlines Golden.

Our beers can currently be found across all the Forum Cafe Bars sites,

including The Broadfield, The York, The Old House, The Forum, The Common Room, The British Oak in Mosborough and The Crown & Anchor in Barugh Green.

### New Regular Beers

**Sheaf Blonde** 4%

**Loxley Pale** 4.3%

**Rivelin Red** 5%

**The Don IPA** 5.8%

**Wyming Bitter** 3.8%


**Sheffield Porter** 4.6%

The current beer in our collaboration series, Pink Fizz 4.5% A Hibiscous Lager brewed with our friends at Black Iris Brewery in Nottingham will be available in keg throughout August.

For Brewery/Tap House plans and other updates you can follow us on twitter @truenorthbrewco Cheers.









**THE DEVONSHIRE CAT**  
 devonshirecat.co.uk

49 Wellington Street,  
 Sheffield,  
 S1 4HG  
 0114 279 700  
 @devonshirecat - facebook.com/devonshirecat



27/08/15 Fruit Beer Thursday  
 01/09/15 Stouts+Porters Night  
 03/09/15 Ciderfest Thursday  
 10/09/15 Chilli Chicken Wing Challenge  
 15/09/15 Gin Tasting Evening  
 17/09/15 American Ales Night

24/09/15 Wheat Beer Night  
 29/09/15 Whisky Tasting Evening  
 01/10/15 CatFest Day One  
 02/10/15 CatFest Day Two  
 03/10/15 CatFest Day Three  
 04/10/15 CatFest Day Four



**Abbeydale**  
 BREWERY



## Thornbridge

Thornbridge beers are gaining popularity worldwide with exports growing in over 30 countries during the past 5 years. And as the number of their international beer fans grow “Partnerships, says Simon Webster, Thornbridge’s Chief Operating Officer, with importers and those managing bars that stock Thornbridge are crucial to ensure our beers reach the drinker in the best of condition”.

Thornbridge Paul Leeyen and Simon Webster Thornbridge Den Bosch Logo 01

Paul Leeyen has been stocking Thornbridge beers for 3 years at his bar in Den Bosch in the Netherlands and has been delighted with the response from his customers “high quality and a great variety of beer styles sets Thornbridge amongst the top breweries we deal with. Working with them and their importer Bier&cO has been a really positive experience”.

Paul has been so de-

lighted with his Thornbridge partnership that he approached the brewery about the idea of opening a Thornbridge Bar in Den Bosch. “After visiting the brewery in late 2014 I was blown away by the passion for their beers that everyone at Thornbridge demonstrated. I knew that if I could find the correct site in ‘s-Hertogenbosch then a Thornbridge bar would be a great success”. After months of looking for the right site Paul has now found one and has been busy working with Thornbridge and Bier&cO with an aim of opening the Thornbridge@’s-Hertogenbosch on the 4th September.

Webster is excited by the concept “it really continues what we have been doing in the UK and on export – find and work with people who are as passionate about beer as we are and have skills that complement what we wish to do with Thornbridge beers. In Bier and Co we have an

experienced importer and likewise with Paul. When we visited his current bar in ‘s-Hertogenbosch, we knew our beers are in safe hands. So when he approached us to develop the Thornbridge Bar it excited us and it has been a lot of fun planning what we are sure will be a great success”.

## Great Taste Awards

**Jaipur and Halcyon voted in the top 50 UK Food and Drinks**  
We are very excited to have received 5 awards for our beers at the Great Taste Awards 2015!

The awards are held annually and known as ‘the acknowledged benchmark for fine food and drink’

with the judging administered by a panel of over 400, including well-known and very well respected specialists.

Only around 1 percent of entrants receive a prestigious ‘3 stars’ at the awards and both **Jaipur**, for the second year running, and **Halcyon**, a new entry, were awarded this accolade. Alongside this we picked up ‘1 star’ for **Wild Raven**, **Otto** and **Saint Petersburg** rounding out an overall great result for us from the awards this year.

All of the winners then proceeded to the next stage where the ‘Top 50 Winners’ were selected, both **Jaipur** and **Halcyon** made the cut and were named as two of the fifty best food and drink products in the UK!

We are very proud that our beers have been recognised at the Great Taste Awards and this brings us up to 20 awards since we started entering in 2011. Having our beers acknowledged in this way by a range of experts from across the food and drinks industry helps to show the wide appeal of our beers.







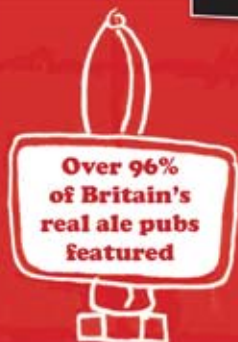
CAMPAIGN  
FOR  
REAL ALE

# WHAT? PUB



**whatpub.com**

Featuring over 35,000 real ale pubs



**Thousands of pubs** at your fingertips!



## Fuggle Bunny Brewhouse

You may think Fuggle Bunny has been quiet of late.....however quite the opposite we have been hopping all over the place. We had raving reviews from our beers that were commissioned for the CLA game fair, with Angus the premium pale Ale beer being a real showstopper.

Likewise Fuggle had a small acting part at the Emmerdale studios for Yorkshire Day, this was a great day out meeting the cast and crew, going behind the scenes especially at the Dingles bar.....and selling our wares, hopefully we may be having a visit from one of the cast shortly down at the Brewery at our Friday Fuggle club....watch this space.

Back to reality we are busy creating Chapter 8 which will be out shortly.

We have created a special beer for the Fat Cat celebrating famous faces of Sheffield, Fuggles has been named Joe Cocker. Look out for Fuggle at the Old Nags Head and the Old Hall Inn, also at the Norfolk Arms beer festival on Bank Holiday.

We were very pleased to have been chosen to have the main pump clip on the bar at the new JDW The Steel Industry at Meadowhall so next time you are there pop in for a pint of Foundry Premium Pale Ale.

Look out for Fuggles mobile bar on 6 September at the food festival at Creswell Craggs. There is so much more happening but I will leave it for now, keep hopping onto the website to find out more.



## Exit 33

Exit 33 Brewing are introducing a new range of special beers under the banner Club 33. 'The idea for the beer series came from our recent trip to the Oregon Brewers Festival in Portland after a brew day with Lucky Lab Brew Co. We love playing with recipes and brewing one offs specials. The Club 33 beers will never be repeated and will always be full on in terms of flavour'

The much-awaited return of our strong beer Citra SmaSH is due at the end of September. This premium golden beer is continuously hopped throughout fermentation with Citra for a juicy smack in the mouth flavour. 'We're a big fan of single malt and single hop beers and this one is a cracker. At 6.5% it tends to take a few scalps but it's hard to resist after the first pint'



## North Union

North Union Brewing Co, the beer business set up by Iain Kenny who previously brewed for Kelham Island Brewery, may soon be getting premises! Currently North Union is cuckoo brewing at Harthill and selling only bottled beers, however Iain is looking at moving his own brewery into a railway arch near the Victoria Hotel in Sheffield and expanding into craft keg.



## Workshop & Retford

Workshop and Retford Brewery - Local Sheffield CAMRA members, Dave Pickersgill and John Stocks are giving their illustrated talk, 'The Workshop and Retford Brewery,' at Workshop Library on Wednesday 16th. September @ 14:00. The associated e-book is available on Kindle.



# 18th - 20th September

Over 200 beers and ciders in the  
heart of the Peak District



**THE OLD HALL INN & THE PAPER MILL INN**  
WHITEHOUGH, CHINLEY, HIGH PEAK 01663 750529  
[WWW.OLD-HALL-INN.CO.UK](http://WWW.OLD-HALL-INN.CO.UK)  
1/2 MILE FROM CHINLEY TRAIN STATION



## Inn Brief

### Brothers Arms

The Brothers Arms laid on a beer and music festival on the same weekend as Tramlines festival and of course the Every-  
 lely Pregnant Brothers was one of the acts performing there. Our Dronfield sub branch had an official social there later on the Saturday evening and enjoyed themselves, however our photo from earlier in the day when the Brothers were playing suggests a good turn out...

### New Barrack Tavern

The New Barrack Tavern are holding something of a live music festival over the August bank holiday weekend with bands on from 7:30pm on the Friday, Saturday and Sunday and stages both indoors and outdoors in use. Entry is free.

The monthly Sunday comedy night also continues, the next being on the 6th September. This is a ticketed event.

We've been told by Kev and Steph to expect a big announcement from them soon, unfortunately it wasn't made in time for this issue going to press but rumour has it that the changes may involve having more guest beers...

### The Hop

The Hop reopened following refurbishment on Friday 14th August (with a number of guests including Sheffield CAMRA branch members invited to a preview night the

day before).

In the public areas the refurbishment is subtle yet effective creating a much lighter, brighter and welcoming atmosphere, however the main bulk of the work has been moving the cellar and installing a proper full size kitchen featuring an American BBQ oven. The food offer is no longer the pie hole, it is now operated by 'The BBQ Collective'.

### Castle/Green Dragon

In addition to the Castle at Bolsterstone, John and Tracy, have recently also taken on the Green Dragon at Thurgoland. They have been at the Castle for some months and have built up, what was, a declining trade. Three handpumps are in use on a daily basis, usually including beer from Bradfield and Robinsons.

### Castle Inn, Bradway

The new managers at the Castle Inn, Bradway are Mark & Gillian. Abbeydale Moonshine is now the regularly available beer, usually alongside Bradfield Farmers Blonde and a guest bitter. Food is now available again served Tuesday to Saturday 12:00-15:30 and 17:00-20:30 plus Sunday lunches served 12:00-15:00. Live music features one Saturday a month and there may be a second entertainment night added per month soon.

### Angel, Holmesfield

The Angel at Holmesfield now has four beers on hand-pump: The two regulars are Abbeydale Moonshine and Chatsworth Bakewell Best Bitter. These are backed up by two guest ales. At time of visit these were "Wards" Best Bitter and Wychwood Hobgoblin Gold.

### Horse & Jockey, Unstone

The Horse & Jockey at Unstone has introduced real ale, at last report this was Timothy Taylors Boltmaker at a bargain introductory price of £2.20 a pint.

### Inn at Troway

The Inn at Troway now has a guest beer alongside the Thornbridge offerings, with the latest guest at time of writing being Bradfield Farmers Brown Cow.

### Peacock, Owl Bar

The Peacock at Owl Bar has reopened following a minor refurbishment.

### Palm Tree, Walkley

A framed document on the wall of the Palm Tree, Walkley lists the landlords of the pub from Joseph Smith in 1856 to David Harrison 2000 to 2015. Jo now runs the pub and David who lives nearby still calls in. The pub is open plan with a neat and tidy beer garden and play area at the back and a smoking area at the front and is child and dog friendly. On Palm Street the pub is served by the number 52 and 95 bus routes. Jo says she will continue with free snooker on Monday, Tuesday

and Wednesday and Thursday is open mic night with a light buffet provided. Saturday there is live music in the evening and Sunday is Fun Day. Tetley Bitter and Farmer's Blonde are on the bar at a very reasonable price.

### Ball Inn, Crookes

The Ball Inn, Crookes has had the old wooden decking replace with stone flags and a stylish stainless steel and glass surround. Having 14 hand pumps there is always a good choice of beers and ciders.

### Red Deer, Pitt Street

The Red Deer on Pitt Street, Sheffield City Centre, has increased the discount offered on pints of real ale to card carrying CAMRA members to 10%.

### Wellington, Shalesmoor

Confirmation of news from the Wellington at Shalesmoor is still awaited at the time of going to press. It will soon be under new ownership. Watch this space!

### Ship Inn, Shalesmoor

Work has finally started on the refurbishment of the Ship Inn at Shalesmoor, following a period of closure since Greene King Brewery sold the pub to the pub company that now owns it. It is expected that the refurbishment will be a simple and sympathetic one, preserving the character of the pub but making it a bit less 'worn out'. A date for reopening hasn't yet been announced but it is expected to be late September.



The Harlequin  
108 Nursery Street Sheffield  
S3 8GG  
Tel: 0114 275 8195

## The Harlequin – Come thirsty!

- ❖ 10 hand pumps serving local and guest ales
- ❖ Exceptional selection of ciders - CAMRA Sheffield cider pub of the year 2011 & 2013
- ❖ Over 140 premium spirits always offered
- ❖ Extensive range of bottled beers from around the world
- ❖ Rotating craft keg choice
- ❖ 5\* food hygiene rating from the Food Standards Agency
- ❖ Live music most Friday and Saturday nights

**In a thirst emergency, find the exit..**



[www.exit33.beer](http://www.exit33.beer)





## Mitchell's Wines

Dennis Mitchell opened his butchers shop at Meadowhead in 1935 to service the new build residential area of Meadowhead and Norton.

In 1963 the shop was enlarged to create an off-licence section or beer off as they were then known.

John Mitchell joined the family firm in 1968 and started to drive the drink side of the business forward, it was very much returnable bottles in those days. The biggest seller being Tennents Gold Label barley wine sold in nips.

Guinness was bottles everywhere, we bought ours from Skinner Rook and Chambers as they used Dublin Guinness, our customers preferred this rather than Park Royal London. Other popular ales included Tetley's family ale, Whitbread Forest Brown, John Smiths Magnet & Mansfield Ale. Our best seller was Shipstone Gold Star sold in flagons because it was the cheapest.

Well wind the clock on 50 years and Mitchells are still there, having picked up many awards over the years including Courage Beer Retailer of the year back in 1994, Winner of Off Licence News Wine Merchant of the Year twice, Spirits & Beer Retailer as well as coming runner up to Selfridges on Oxford Street as Drinks retailer of the year 2015.

What makes this shop so special? Well within its 3000 sq foot of floor space lay a labyrinth of drink departments as well as the North of England's best fine Havana cigar selection.

The biggest hit of the last 2 years is the rise in popularity of Whisky and Gin. We are also now seeing a major rise in Craft & Artisan Beers.

We currently stock over 500 real ale and ciders including 26 from Thornbridge Brewery alone from which we started out with just 2 core ranges Jaipur and Kipling.

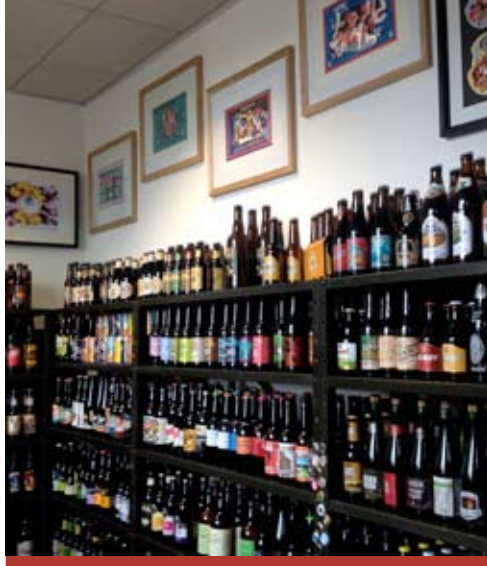
We have a dedicated fridge to cool selected ales down to between 10c and 14c for that perfect serve.

Wherever possible, we try to support local breweries and stock over 100 varieties of Yorkshire/Derbyshire ales. Along with cider from Holmfirth and Tadcasters very own Samuel Smiths.

Looking further afield we have great beers from surrounding counties and have a great selection of quality ales from as far as Scotland and Cornwall.

We also specialise in coeliac approved beers from Wold Top Brewery along with other Gluten free, Organic & fair trade products. We always have an ever changing £1 guest ale value offer.

So next time you're passing Meadowhead there's no excuse to not call in Mitchells.



## Hop Hideout

Abbeydale's award winning specialist beer shop Hop Hideout launched their Tasting Room in August, enabling customers to sit in the intimate space and enjoy the wide range of bottled beers and ciders on offer from across the globe. The Tasting Room will be open from noon to close, Tuesday to Sunday and in addition to the varied bottled selection, customers can enjoy a selection of two draught beers via the dedicated tap facility. Hop Hideout stocks over 400 beers, with a larger dedicated range covering the UK, in addition to countries like America, Holland, Austria, Belgium, Denmark, Italy and Spain. Key to Hop Hideout's success has been to search out and find interesting beers and offer a rotating range including a dedicated cider and perry offering. The two draught keg lines have featured beers from Yorkshire favourites Magic

Rock to hard to find breweries like Kent's Alphastate and experimental Swede's Omnipollo. The ciders and perries are all sourced to showcase the rich variety produced across the UK, with over twenty-five different varieties. Oliver's from Hereford, Somerset's Sheppy's, Welsh producers Ty Gwyn and Thistly Cross in Scotland all nestle in the fridges.

Jules Gray, one half of Hop Hideout, shared, "The intimate space and ever-changing beer selection makes this a great space to visit, discover and enjoy a beer. We're starting to plan events in too. We have the fantastic young London brewery Brew By Numbers hosting a tasting in September, Yorkshire's Brass Castle in October and an exciting evening as part of Sheffield's Off The Shelf festival with one of the UK's top beer writer's – Pete Brown".





# CATFEST 2015



THURSDAY 1<sup>st</sup> - SUNDAY 4<sup>th</sup> OCTOBER

x 24 FIRKIN FOUR DAY PARTY!  
'BRIT-HOP' THEME - ALL UK HOPPED ALES.

THURSDAY - OPENING NIGHT ULTIMATE  
BOOZE QUIZ, WINNING TEAM GETS A 96  
FIRKIN OF DELICIOUS ABBEYDALE ALE!

FRIDAY - MEET THE BREWERS!

LIVE MUSIC ALL WEEKEND

SUNDAY - ROAST LUNCH

ALL PROCEEDS FROM ONE SPECIAL CASK  
DONATED TO BLIND VETERANS UK CHARITY



devonshirecat.co.uk  
facebook.com/devcat

email: info@devonshirecat.co.uk  
phone: 01142796700



## Award Presentations

We recently presented July Pub of the Month to the Cremorne on London Road, August pub of the Month to the Red Deer on Pitt Street and District Pub of the Year to the Anglers Rest at Millers Dale.

A thanks to all the above pubs for hosting us and making us welcome along with a congratulations on your respective awards.

Also a special thanks to Wincle brewery who supplied a complimentary bottle of beer to all of us

who attended the presentation at the Anglers Rest as a take home gift, Wincle beers often feature on the bar at the Anglers and on the night of the presentation a pin of theirs was set up on the bar as an additional guest beer poured on gravity.

Finally not long after we presented Graham and Beryl with their District Pub of the Year award they celebrated their Ruby wedding anniversary. Again, congratulations!



## Derbyshire Pub of the Year Old Poets Corner, Ashover

The Old Poets Corner at Ashover, near Chesterfield, won Derbyshire Pub of the Year, pictured is Jane Lefley of Chesterfield CAMRA presenting the award.

## Vote for Pub of the Month!

Our Pub of the Month award is a bit of positive campaigning, highlighting local pubs that consistently serve well kept real ale in friendly and comfortable surroundings.

Voting is your opportunity to support good, real ale pubs you feel deserve some recognition and publicity.

All CAMRA branch members are welcome to vote at branch meetings or on our website.

It's not one pub against another, simply vote YES or NO as to whether you think the pub should

be PotM. If we get enough votes in time we will make the award.

Nomination forms are available at branch meetings and on the website. The pub must have been open and serving real ale for a year and under the same management for 6 months.

Winners compete alongside our Good Beer Guide entries for branch Pub of the Year, the winner of which is entered into the national competition.

The list of nominees includes which buses to take if you fancy a trip to try them out:

## The Nominees

### Bull's Head

Ranmoor (buses 120, 784, 786)

### Dove & Rainbow

City Centre

### Old Hall Hotel

Hope (buses 272, 273, 274)

### Old Queens Head

City Centre

### Porter Cottage

Sharrow Vale Road (buses 65, 81, 82, 83, 83A, 84, 85, 88, 215, 240, 241, 272, 799)

### Rising Sun

Abbey Lane (buses 65, 70, 215, 272)

### Three Merry Lads

Lodge Moor (bus 51)

Vote online now at  
[sheffieldcamra.org.uk](http://sheffieldcamra.org.uk)



## Champion Beer of Britain

The finals of the Champion Beer of Britain competition (CBoB) were judged at the Great British Beer Festival (GBBF) in London in August with the results announced on stage at the trade & press session. The winners were:

### Supreme Champions

Gold: Tiny Rebel *Cutth*  
Silver: Kelburn *Jaguar*  
Bronze: Dancing Duck *Dark Drake*

### Mild

Gold: Williams Brother *Black*  
Silver: Rudgate *Ruby Mild*  
Bronze: Great Orme *Welsh Black*

### Best Bitter

Gold: Tiny Rebel *Cutth*  
Silver: Highland *Scapa Special*  
Joint Bronze: Barnegates *Tag Lag*,  
Salopian *Darwin's Origin*

### Speciality

Gold: Titantic *Plum Porter*  
Joint Silver: Kissinggate *Black Cherry Mild*,  
Saltaire *Triple Chocoholic*  
Bronze: Hanlons *Port Stout*

### Bitter

Gold: Pheasantry *Best Bitter*  
Silver: Acorn *Barnsley Bitter*  
Joint Bronze: Purple Moose *Madog's Ale*,  
Timothy Taylors *Boltmaker*

### Golden

Gold: Kelburn *Jaguar*  
Silver: Adnams *Explorer*  
Bronze: Blue Monkey *Infinity*

### Strong Bitter

Gold: Dark Star *Revelation*  
Silver: Salopian *Golden Thread*  
Bronze: Grain *India Pale Ale*

### Champion Bottle - Conditioned Beer

Gold: Harveys *Imperial Extra Double Stout*  
Silver: Fyne Ales *Superior IPA*  
Bronze: Mordue *India Pale Ale*

These awards along with the champion Cider & Perry are presented at the awards lunch on 17th October at the Black Country Living Museum where following a tour of the museum site a four course dinner will be served with each course expertly matched with an award winning beer. There will also be a guest speaker from the brewing and pub industry. Tickets are £75 each including the tour, food and drink.

## CAMRA National Pub of the Year 2008/09 Sheffield and Yorkshire Pub of the Year 2014

# KELHAM ISLAND TAVERN

## 62 RUSSEL STREET, S3 8RW - 272 2482

- ✓ At least 12 real ales always including a mild, stout and porter, served in lined glasses at sensible prices
- ✓ Traditional cider and perry
- ✓ A selection of English and world craft beers
- ✓ Ever-changing craft keg line
- ✓ Food served 12-3 Mon-Sat
- ✓ Folk night Sunday
- ✓ Quiz night Monday





## ★ Pub of the Month September 2015 ★ Shakespeares, Gibraltar Street

I'm sure I'm not the first CAMRA member to have moved home to make a favoured pub my "local" but this was the case almost two years ago when I decided to move from Doncaster to Sheffield as proximity to Shakespeare's on Gibraltar Street was a very important factor in flat-hunting.

The pub was opened as The Shakespeare in 1821 as a Georgian coaching inn on the site of an earlier establishment dating back to the 18th Century. After experiencing mixed fortunes under a succession of licensees in the late 90s and early 'noughties' it closed its doors in January 2010. Subsequently purchased and restored by real ale and music fan William Wagstaff it reopened as Shakespeare's just in time for Tramlines in July 2011.

The small front bar to the right on entering is the heart of the pub - containing the bar itself and the regularly updated "Shakesbeers" board. This is a lovely place to enjoy the fine beers on offer when the pub is quiet but can become quite congested at weekends. To the left is a side room dominated by a superb grandfather clock. Two distinct drinking areas with barrel tables and bar

stool seating are located to the rear of the bar and through here to the right is a long back room which was originally a passageway for coaching horses (and subsequently brewery drays). Now known as The Archway this is furnished with long 'picnic tables' & benches, a darts board and a classic jukebox (recently returned to working order). The walls here are decorated with a huge array of pump clips, beer mats and posters. The large garden to the rear of the pub is very popular on warmer days, with the enclosed area to the left having been the stable back in coaching inn days.

Upstairs is the renowned "Bard's Bar" which hosts a varied programme of gigs and the very popular monthly King Bee night, as well as meetings, private parties and even book launches. It's been a great pleasure to see my favourite band (Sheffield's own High Hazels) play here three times - and two of the band's videos were partially filmed in the pub! Also upstairs is a small games room with darts, bar billiards, table football and a selection of board games.

Moving on to the all important beer there's always 9 cask ales on sale (over

3,250 in the four years since the pub reopened) and it's the range and quality of these that quite rightly wins plaudit upon plaudit from discerning drinkers looking for something a little different to/over and above the norm. Beers from highly regarded UK breweries such as Hopcraft, Siren Craft, Buxton & Mallinson's regularly feature alongside fine local breweries including Steel City and Blue Bee. Abbeydale Deception is the one regular beer - always popular and at a very reasonable £2.30 per pint. The guest beers are also competitively priced given their calibre and (in many cases) rarity. When the pub is quiet the helpful and knowledgeable staff are happy to serve any beer from the cellar that's tapped and ready to drink.

The 'less traditionally minded' beer connoisseur can now enjoy at least three quality keg beers from pioneering breweries in the US, UK and Europe. There's also three cask ciders and a superb selection of over 100 single malts.

Food (very commendably in the author's opinion) is limited to good value (70p) filled bread rolls, Stobart's pork pies and a range of bar snacks in the shape of crisps, pork scratchings and nuts.

Although the main criterion for any CAMRA award has to be the availability of a range of high-quality cask beers (clearly achieved with flying colours in this case!) a pub can only be as good as its staff - and here Shake-

peare's excels yet again. Manager Chris Bamford has been there from the start and what he doesn't know about sourcing and caring for quality beer really isn't worth knowing. Chris is very ably supported by Assistant Managers Chris Wadsworth and Keisha Wright, together with the wonderful bar team of Wendy, Louis, Lizzie & James. All, and many of the lovely "regulars", have become friends.

Downstairs the strong musical links continue - with 'Sheffield Rapper' early Monday evenings, Ceilidh sessions in the back room on Tuesdays and 'sing-arounds' in the front side room on Wednesdays. The pub also plays a major role in the "Sheffield Sessions" annual Folk Festival. Chris hosts an excellent quiz every Thursday at 9:30pm (fans of the Bard will no doubt appreciate the eloquent rendition of an extract from one of his works which forms the basis of Question 25).

The 'Shakey' appeals to a wide cross-section of people including musicians, artists, writers, theatre and studio staff and students as well as CAMRA members and other beer connoisseurs from all over the UK (and often even further afield).

The presentation of this richly deserved Pub Of the Month award will take place on Tuesday 15th September at approximately 8pm. All are welcome to attend - it's bound to be a fine evening

**Martin Clark**



# OCT

WED  
21  
5-11PM

THU  
22  
5-11PM

FRI  
23  
12-11PM

SAT  
24  
12-10PM

# 2015



@scbf41

[steelcitybeerfestival.co.uk](http://steelcitybeerfestival.co.uk)

# KELHAM ISLAND MUSEUM



## Barrow Hill volunteers wobble around Wakefield

This trip, on the first of August, was reward for volunteering for the bar at the Rail Ale Festival at Barrow Hill. Six of us from Dronfield CAMRA, Roger & Ruth Hepworth, Ken Perkins. Michelle Kay, Linda Walker and myself, Kevin Thompson, attended. Ken and Michelle did their own thing while the remaining four of us did our best to hang onto the main party.

Mark, the trip organiser, had laid on a coach to sample some of the delights of Wakefield at a variety of venues. The eager fifty or so CAMRA members assembled in Chesterfield on Saturday morning for the one hour journey up the M1. As everyone knows, Wakefield is the administrative centre of West Yorkshire. Pub quiz addicts will be familiar with the fact that Wakefield is the largest city in the UK which does not possess a League Football team.

Wakefield has a long history of brewing which is discussed in some detail on Wakefield CAMRA's website.

First port of call was Fernandes Brewery Tap & Bier Keller, Avison Yard, which had opened earlier for our arrival. The queue

soon ran from the bar down the pub's narrow, steep stairs with drinkers quaffing their first pint free. Roger and Myself selected Ossett Brewery's Yorkshire Blonde, as our first tippie, an extremely good session beer at 3.9% to start the day. Ruth, a dark beer drinker went with the Fernandes Dustcutter, while Linda plumped for a medium sweet, but strong cider. As there were people still just getting started on their first pint, we decided to sample another. This time we went with Fernandes Polaris, while the ladies stuck with their original choices.

Next on the itinerary came the Bull & Fairhouse, a traditional, music orientated pub with a good selection of ales. Sticking to paler ales, myself and Roger went with Old Bob's Silver Bullitt at 4%, Ruth tried Hazelnut Mild from the Brass Castle Brewery while Linda went with Weston's Rosies Pig, a medium cider at 5%. Actually attached next door on Market Street, it was a short hop to Graziers, a more sports orientated pub. There Roger and myself ordered two pints of Leed's Brewery Pale, a nice hoppy beer, in line with the oth-

ers we had sampled elsewhere. Ruth went with an old favourite in Taylor's Landlord, while, I threw a nice Old Rosie cider in for Linda, omitting to mention the fact it came in at a leg wobbling 7.5%.

As we were fast approaching the halfway point of the day, the munchies set in and we went off in search of food. On the main shopping area of Westgate, we found a nice local bakers to fill a corner. The sausage roll, chicken and stuffing rolls and Cornish pasty did the trick and we set off for the next destination of Wakefield Labour Club, affectionately known locally as "The Red Shed," due to it's socialist roots. The club situated, just off the bottom of the Ridings, was already quite busy and our numbers soon had it buzzing with conversation. The beer was cheap and an excellent Phoenix Gold was consumed by the men, while Ruth chose a Plum Porter from Titanic Brewery.

Due to its reputation, we walked back over Westgate in search of Harry's Bar. After a few mistakes with the GPS, a local actually pointed out the alleyway where

the pub was situated. This bar was lovely, a quaint, wooden adorned building, large enough for the group, but small enough for intimate conversations. First choice here was a favourite of mine, which Roger went along with, Moorhouses Pride of Pendle, a consistently good pale. Ruth plumped for the North Riding Oatmeal Stout, a pint of which I finished the day on. The cider on the bar which caught Linda's eye was a cherry 5% medium.

So, as it approached 6pm and with a bellyful of beer, we wobbled our way back to Wakefield Train Station for our coach pick-up, with good experiences of great venues, and the added bonus of no poor beer throughout the day. Another beer was consumed in the Blue Bell in Chesterfield, Hobgoblin's Gold, before boarding the bus back to Dronfield. I should think we will return sometime, especially as Revolution Brewery is opening a venue there later this year to boost the real ale scene.

**Roger Hepworth**





# PLEASE SPONSOR ME!

This year we are teaming up with the **Master Cutler's Challenge** again and using the **firkin sponsorship** to help raise money for this great cause.

## WHAT DOES IT ENTAIL?

Well, for £125 you get:

6 FESTIVAL TICKETS (not valid after 5pm on Friday)

6 PROGRAMMES

YOUR NAME OR YOUR COMPANY NAME ON THE BEER SPONSORED, IN THE PROGRAMME AND DISPLAYED AT THE FESTIVAL

STATED £25 CONTRIBUTION TO MASTER CUTLER'S CHARITY

1 FREE PINT PER TICKET

1 FREE PUB GAME PER TICKET

Email us at [sponsorship@sheffieldcamra.org.uk](mailto:sponsorship@sheffieldcamra.org.uk)

SAT 5 SEP

# JOIN THE ANNUAL BEER CENSUS PUB CRAWLS

Our annual city wide survey that takes the pulse of Sheffield's beer scene, recording how many different beers you can find on one day and possibly proving that Sheffield is the real ale capital of Britain. This is an annual survey we have been doing for a few years now, which started following an argument between someone from Derby and someone from Sheffield about which City was the true beer capital! A number of other Cities including Nottingham, Norwich and York now also conduct such a census.

We have a number of different pub crawls going on at the same time, each with a designated leader who will have survey forms and take you to the various pubs on their route.

The daytime crawls generally start at midday and finish at the Red Deer to hand paperwork in, the evening crawls start at the Red Deer at 7pm and we

regroup at the end of the night at the Kelham Island Tavern.

As well as gathering useful campaigning data for

us, it is also a great day out trying different beers and visiting pubs you might not normally get chance to visit.

All the daytime crawls except the City Centre ones involve using buses, trains or trams between pubs so we recommend buying an all day travel ticket - If you are doing the Chapeltown route this also involves train travel so the ticket is a Travelmaster at £7.60, the others are bus and pos-

## Route D

**Deepcar, Hillsborough, Bradfield**  
Meet at Royal Oak, Deepcar  
(buses 57 or SL) at midday

## Route F

**Walkley, Crookes, Commonsides**  
Meet at Walkley Cottage, Walkley  
(buses 31, 52 or 95) at midday

## Route C

**Banner Cross, Hunters Bar, Ecclesall Road**  
Meet at Banner Cross Hotel, Banner Cross  
(buses 65, 70, 81, 82, 83, 85, 88 or 272)  
at midday

## Route G

**Lodge Moor, Nether Green, Ranmoor**  
Meet at Three Merry Lads,  
Lodge Moor (buses 51) at midday

## Route A

**Dore, Totley, Millhouses, Broadfield**  
Meet at Devonshire Arms, Dore  
(buses 70 or M17) at midday

**West B**  
Meet at  
prop

**Norton**  
Meet at  
(



## Route E

**Chapeltown, Burncross, Meadowhall, Attercliffe**

Meet at Wagon & Horses, Chapeltown  
(train or buses 29, 75, 79A, 87 or 265) at 11am

sibly tram so the ticket to get is a Citywide at £4.50. Both tickets are valid on all bus operators and sold by bus drivers and tram conductors.

If you would like to join one of the crawls, just go to the meeting point shown below and find the appointed leader. If you cannot make any of

the official crawl but still want to take part, you can take note of the beer range in any Sheffield pub you are in that day and email the details to us. Please include the details of the pub, Brewery/Beer/ABV and the price per pint. Also it would be useful to note if the pub serves real cider or craft keg too.

## (Evening) Routes K, L, M

**at Kelham Island, Shalesmoor, Neepsend, Hillsborough**  
the Red Deer, Pitt Street at 7pm and split up as appropriate. All routes ending at Kelham Island Tavern

## Routes H, I, J Sheffield City Centre

Meet at the Sheffield Tap  
at 11am and split up as appropriate

## Route B

**at Lees, Woodseats, Heeley, Highfield**  
at Cross Scythes, Derbyshire Lane  
(buses 19 or 20A) at midday



ISSUE 456  
SEPTEMBER 2015



## Volunteer at the Festival

Fancying joining the volunteer team of organisers, managers and staff that make our beer and cider festival happen?

The staffing form is now live on our website at [www.sheffieldcamra.org.uk/festival](http://www.sheffieldcamra.org.uk/festival), please fill this in with your details and the hours you wish to work. Our staffing officer will then register you and allocate you a job and reserve you a staff t-shirt (note only a limited stock of t-shirts have been provided by our sponsors so these are first come first served). Volunteers also get a pack of complimentary beer tokens and of course free admission!

There are a variety of roles at the festival, the most obvious being serving beer and cider at the bar but we also need staff at the entrance dealing with admissions, glasses, programmes and customer service; staff on the various stalls including merchandise, membership, beer tokens and games; staff in the office for various admin duties and of course members of the cellar team looking after the beer behind the scenes!

We also really need volunteers to help on the site team setting everything up in the days before we open and taking everything down on the Sunday - we move in to an empty site on the Monday and build all the bars etc. and have to leave an empty site with everything back in storage on the Sunday!

We are always very short of helpers taking down and packing away on the Sunday - although it should be noted a change this year is the festival is closing a little earlier on Saturday where some of the takedown jobs will begin before the staff social - however on Sunday there will still be plenty to do including van runs to our storage location and as there will be no beer to drink we will provide volunteers with food - sandwiches at lunch time and a hot meal in the evening after work is complete.

Working a beer festival is generally enjoyed by all - work is involved of course - however its is also fun and if you have a passion for good beer or cider then a successful event all feels worthwhile!



## VISIT OUR STEEL CITY BEER & CIDER FESTIVAL

Wednesday 21st - Saturday 24th October

This year is the 41st beer festival Sheffield & District Campaign for Real Ale has run under the Steel City banner although only the second year at Kelham Island Industrial Museum - the change of venue last year proved a very popular move. This year will be a very similar event to last year, not wanting to spoil what everyone loved, but there will be some tweaks to improve it based on feedback from both staff and customers.

If you don't know where the museum is, you need to be on Alma Street in the Kelham Island District about where the Fat Cat pub, Kelham Island Brewery, Craft & Dough pizza restaurant and Urban Quarter burger restaurant is located. This is a short walk from bus stops on Nursery Street (Harlequin

pub - buses 47, 48, 53, 87), bus stops on Gibraltar Street (Shakespeare's pub - buses 57, 79, 79A, 81, 82, 84, 85) and the tram stop at Shalesmoor (Blue/Yellow routes). There is a long driveway from here to the museum between the river and the apartment blocks.

When you arrive at the admission gate you need to pay your admission fee, obtaining your wrist band (if you are a CAMRA member claiming discount entry please have your membership card ready to show) and also pay the glass deposit. We will have a choice of pint or half pint glasses (both will also have a third pint line if you want to drink in smaller taster size measures). The glasses are branded with this year's festival logo along with the sponsor's

logo. You can return the glass when you leave the festival to get your deposit back or keep the glass as a souvenir of your visit!

Once in you need to buy beer tokens to spend at the bars. There are a number of stalls selling them around the festival. Our bar staff as a result do not handle cash which speeds up service and improves security for us. The merchandise, games and food stalls all take cash however.

We will have around 150 different real ales available to try this year. Once again the main beer list has been put together by our branch Chairman Andy Cullen featuring a showcase of beers brewed in or near Sheffield along with some interesting, new and rare beers from further afield and of course some old favourites. Andy is being assisted in sourcing some of the beers by our friends at Blue Bee, Dave from Steel City Brewing and Tom at the Beer Engine. Tom will be organising a pallet load of beers from London breweries which will be split between the pub and the festival.

Meanwhile our Cider bar managers Sarah & Hazel have been busy sourcing a selection of cider and perry - expect a range of around 20-30 to choose from, brought from across the UK although we will still as ever have the locally produced Woodthorpe Hall cider too.



### UPPER

Access via the door on site then over the long beer bar and then serving cold food and a great atmosphere within. The Upper Hall is also home to Tombola.



### VICTORIA

An atmospheric outdoor area and is also home to hot food. You will also find toilet facilities alongside.



### MILLOWNERS

Fronting on to the corner this is a recreation of a pub and bar where our pub landlord and serving handpump. This area is a comfortable, quiet area. Millowners Arms is also from local brewery history.





## UPPER HALL

Upon the right when you arrive on the footbridge, here you will find the main cider bar, the traders and the live music stage. Expect to see a band on! The line to the merchandise stand



## INNER COURTYARD

For area, this links all the other areas to the street food stalls served by the traders. You will also find the smoking area and the courtyard.



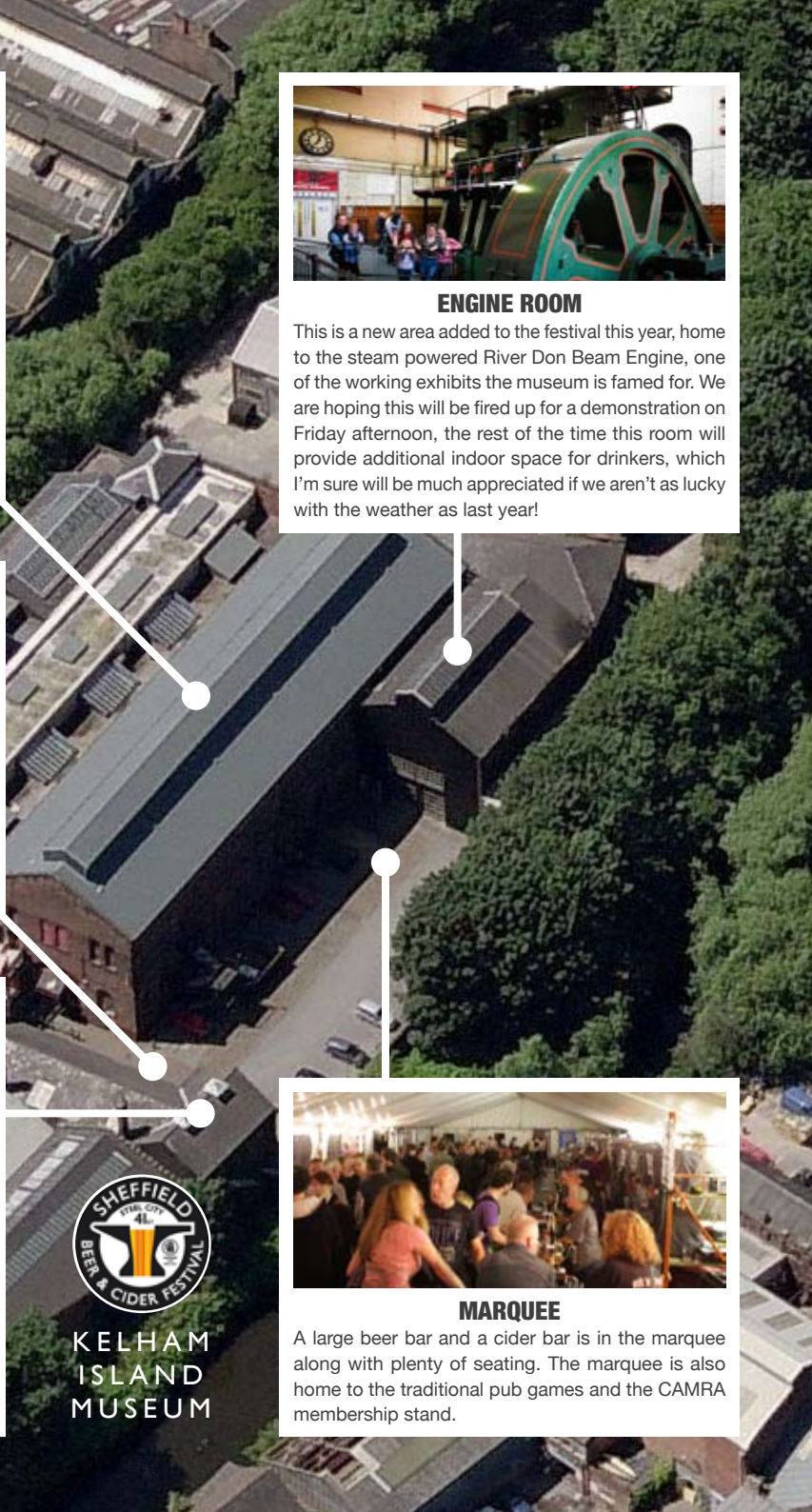
## OWNERS ARMS

One of the Victorian Courtyard, this traditional local pub with seat-ers staff will assume the role of serving from a variety of beers on offer. The festival will always offer a relaxed and relaxing atmosphere. The pub is also home to displays of items of local history.



## ENGINE ROOM

This is a new area added to the festival this year, home to the steam powered River Don Beam Engine, one of the working exhibits the museum is famed for. We are hoping this will be fired up for a demonstration on Friday afternoon, the rest of the time this room will provide additional indoor space for drinkers, which I'm sure will be much appreciated if we aren't as lucky with the weather as last year!



## MARQUEE

A large beer bar and a cider bar is in the marquee along with plenty of seating. The marquee is also home to the traditional pub games and the CAMRA membership stand.



KELHAM  
ISLAND  
MUSEUM



## Festival Guide

These are the events we're aware of in or near Sheffield over the coming months. Links and updated info on our website.

### August

#### Peterborough CAMRA

**Tue 25 – Sat 29 Aug**

Held across multiple giant marquees on Peterborough's Embankment – a riverside park featuring over 400 real ales plus cider, perry, world beers, food, games, stalls, music and more. For opening hours and entry prices visit [www.beer-fest.org](http://www.beer-fest.org). East Midlands Trains run direct trains from Sheffield to Peterborough every hour on the Liverpool-Norwich route with discounts available for advance booking.

#### Durham CAMRA

**Wed 26 – Sat 29 Aug**

Held in Durham Students Union, see [www.durhambeerfestival.org.uk](http://www.durhambeerfestival.org.uk) for more details. Cross Country trains run direct from Sheffield to Durham every half hour.

#### Miners Arms, Hundall

**Thu 27 – Mon 31 Aug**

Following the success of the Miners' inaugural beer festival as part

of Three Valleys Festival in June, they are hosting another one over the August bank holiday weekend to coincide with the charity cricket match and Land Rover trials in the village. An outside bar will host a range of beers and ciders and Deli-Licious of Dronfield will be providing a food stall. TM Travel bus 14 (Dronfield-Chesterfield) runs past the pub door during the daytime Mon-Sat.

#### Hope Valley Beer & Cider Festival @ The Old Hall

**Thu 27 – Mon 31 Aug**

The Old Hall Hotel in Hope's regular bank holiday beer festival where a marquee appears outside playing host to a range of around 40 real ales and 20 ciders plus food and music. Buses 272/273/274 (Sheffield-Castleton) pass the pub's door or Hope railway station is a 10 minute walk away.

#### Dronfield Arms

**Fri 28 – Sun 30 Aug**

The outside bar will be open all weekend with additional beers and ciders to enjoy. On the Saturday there will also be a pizza stall, childrens face painting (afternoon) and live music (evening). The pub is a few minutes walk from Dronfield Station and the 44 bus.

#### Anglers Rest, Bamford

**Sat 29 – Mon 31 Aug**

The Anglers Rest in Bamford hold a bank holiday beer festival. Buses 273/274 pass the pub's front door or Bamford station is about 10-15 minute walk away.

#### Party in the car park @ Green Dragon

**Sun 30 Aug**

The Green Dragon on Dronfield's Church Street hosts a bank holiday party outside from 3pm with an outside bar, live music and fish & chip stall.

### September

#### Elsecar by the Sea (Barnsley CAMRA)

**Thu 3 – Sat 5 Sep**

The next instalment of Barnsley CAMRA's regular year round programme of beer festivals! This one is held at Milton Hall on Fitzwilliam Street, Elsecar, a 5-10 minute walk from Elsecar railway station which is served by the hourly Sheffield-Leeds via Barnsley stopping train. The festival features around 30 real ales sourced either locally or from coastal locations along with cider and perry. There is also food available, a tombola and CAMRA products stall. The beer festival is running alongside the Elsecar-by-the-sea gala weekend which takes place across the village and includes street theatre, entertainment, stalls and rides in the famous Elsecar Park, the 4 local pubs are also taking part. See [www.barnsleycamra.org.uk](http://www.barnsleycamra.org.uk) for more information.

#### Tamworth CAMRA

**Thu 3 – Sat 5 Sep**

At the Assembly Rooms, a 10 minute walk from the railway station with a choice of around 90 real ales. See [www.lstcamra.org.uk](http://www.lstcamra.org.uk) for details.

#### Leeds International

**Thu 3 – Sun 6 Sep**

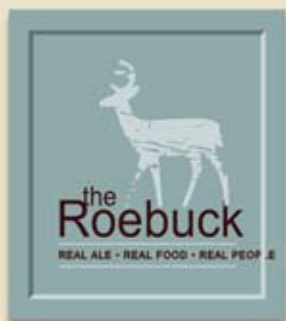
This is one of the new wave craft beer festivals and is back at Leeds Town Hall for it's 2015 outing. A fairly substantial beer list features with both cask and keg involved along with street food, market and live music. See [www.leedsbeer.com](http://www.leedsbeer.com) for more details.

#### Burnley CAMRA

**Thu 10 – Sat 12 Sep**

OK, I admit this one isn't local or so easily accessible from Sheffield, requiring a change of trains at either Leeds or Manchester, however it coincides with Sheffield Wednesday's away fixture in the town! Burnley Beer Festival is held at the Mechanics Thea-





★ Sheffield CAMRA Pub of the Month December 2014 ★



## KARAOKE

LAST FRIDAY  
OF THE MONTH



4 TVS  
SHOWING  
BT SPORT

FREE  
XBOX



POOL  
2 tables

## MUSIC

Sep 19  
MOONSHINE

Oct 10  
EYEBALL

Oct 17  
BIG CITY  
BLUES

Oct 24  
SWANSONG

Nov 14  
AMELIA  
CARTER

DJ every  
Fri/Sat  
if no  
band on

## SUNDAY LUNCH

home cooked  
12-6pm - £5.99



2 MEALS  
FOR £10

selected main meals  
Mon-Sat 11am-9pm

6 ROTATING  
CASK ALES

including our  
own Wood  
Street beers



tre on Manchester Road and this year features beers from every town with a Championship football team amongst the beer list.

## **York CAMRA**

**Wed 16 – Sat 19 Sep**

The popular annual tented festival at York's Knavesmire is back for it's 7th year with a range of over 450 real ales and 100 ciders plus foreign beers, wine and soft drinks. For more information including opening times and entry fees see [www.yorkbeerfestival.org.uk](http://www.yorkbeerfestival.org.uk). Direct trains run from Sheffield to York every half hour, the venue is a short bus ride out of the City Centre.

## **Old Hall & Paper Mill**

**Fri 18 – Sun 20 Sep**

The Old Hall Inn and it's neighbour the Paper Mill Inn, located in the small Peak District village of Whitehough (near Chinley, a 15 minute walk from the station there), together hold their main beer festival of two each year featuring around 200 real ales and ciders plus food and entertainment.

## **New Inn**

**Fri 18 – Sun 27 Sep**

The New Inn on Gleadless Common is 150 years old this year and celebrating with a beer festival! The pub is easily reached with the 51

bus passing the front door and Hollinsend tram stop only a few minutes walk away.

## **Scunthorpe CAMRA**

**Thu 24 – Sun 27 Sep**

At the Royal Hotel, a 10 minute walk from the railway station, featuring around 25 real ales. Free entry for CAMRA members. See [www.scunthorpe.camra.org.uk](http://www.scunthorpe.camra.org.uk) for details.

## **Amber Valley CAMRA**

**Thu 24 – Sun 27 Sep**

At the Strutts Club in Belper, a 5 minute walk from the station on the Derby-Matlock line and featuring more than 80 beers and ciders. Food and entertainment also features. For details see [www.ambervalleycamra.org.uk](http://www.ambervalleycamra.org.uk).

## **October**

## **Huddersfield CAMRA Oktoberfest**

**Thu 1 – Sat 3 Oct**

The APNA venue on Spring Grove Street is filled with a selection of 75 different real ales plus a choice of ciders, food and stalls. Local trains run direct from Sheffield to Huddersfield hourly, operated by Northern Rail.

## **Devonshire Cat**

**Thu 1 – Sun 4 Oct**

The Devonshire Cat's first beer festival will be centering the cask offering around UK hops – really showing off what they can do so keep your eyes peeled for some fantastic beers available over the weekend! "CATFEST 2015" will be creating and spreading awareness for the Blind Veterans UK charity, Sheffield contingent & proceeds for 1 special cask in the beer festival will be donated to their cause. Further information can be found at [blindveterans.org.uk](http://blindveterans.org.uk) or on [facebook.com/blindveteransuk](https://facebook.com/blindveteransuk). See the pub's advert in Beer Matters for more details.

## **Brunswick, Derby**

**Thu 1 – Sun 4 Oct**

The Brunswick is a well known old multi-room brewpub near Derby railway station. For their beer festival additional guest beers appear on a stillage in one of the rooms with the total beer list for the weekend running to a choice of around 50. They also plan to offer a selection of around 20 ciders and perries during the festival. [www.brunswickderby.co.uk](http://www.brunswickderby.co.uk).

## **Stoke on Trent CAMRA**

**Thu 8 – Sat 10 Oct**

Around 200 real ales in one hall of the Fenton Manor Sports Complex. [www.camrapotteries.co.uk](http://www.camrapotteries.co.uk). From Sheffield get there by train by changing at Stockport or Derby. The venue is a short taxi ride from the station.

## **Indy Man Beer Con**

**Thu 8 – Sun 11 Oct**

Or to give it the full title, the Independent Manchester Beer Convention, hosted at the Old Victoria Baths in Chorlton on Medlock, Manchester. A range of modern craft brewers showcase in various settings around the old swimming baths with both craft and keg beers involved, advance tickets essential as it is popular. [www.indymanbeercon](http://www.indymanbeercon) for more details.

## **41st Steel City**

**Wed 21 – Sat 24 Oct**

Our own annual beer & cider festival is confirmed for 2015 and back at Kelham Island Industrial Museum following last years success, with a few tweaks following customer and staff feedback. Everything you loved about the festival will be there again plus we will have more beer and a slightly bigger capacity!

## **Buses and Trams**

### **South Yorkshire:**

Travel Line 01709 51 51 51  
[www.travelsouthyorkshire.com](http://www.travelsouthyorkshire.com)

### **Derbyshire**

[www.derbybus.info](http://www.derbybus.info)

### **Trains**

National Enquiries 08457 48 49 50  
[www.nationalrail.co.uk](http://www.nationalrail.co.uk)

## **Trading Standards**

[trading\\_standards@sheffield.gov.uk](mailto:trading_standards@sheffield.gov.uk)  
Consumer advice (0114) 273 6289  
Sheffield Trading Standards, 2-10  
Carbrook Hall Road, Sheffield S9 2DB

# OUR BEERS



**Five Rivers**  
Light and hoppy  
session ale 3.8%

**GOLD**

**MAGNA 2013**



**Sheffield Porter**  
Darkly delicious  
porter 4.4%

**GOLD**

**MAGNA 2011**



**Crucible Best**  
Complex, dark  
best bitter 3.8%

**BRONZE SILVER**

**MAGNA 2014, 13**



**Blanco Blonde**  
Lager-style  
refreshing  
ale 4.2%

**SILVER**

**OAKWOOD 2010**



**Forgemasters**  
Robust, citrusy  
golden ale 4.8%

**BRONZE**

**MAGNA 2014**

We also have a regularly changing range of specials including our single-hop IPA series



THE HALLMARK OF A PERFECT PINT



Are you looking for a unique party experience? The Sheffield Brewery Company is a traditional real ale brewery situated in an authentic Victorian works.

We have our own private bar where you can enjoy an evening of our award winning ales. We can also provide you with a pie and pea supper, or barbecue in the summer.

Guided tours of the brewery are available on the night so you can see exactly how your beer gets from grain to glass.

**THE HALLMARK OF  
A PERFECT PINT**

tel: 0114 272 7256

@sheffieldbrewer

[www.sheffieldbrewery.com](http://www.sheffieldbrewery.com)

## Sheffield & District

### Info and bookings:

Phill Wood (see committee section)

### Branch meeting

**8pm Tue 1 Sep**

Our usual monthly members meeting to share pub, club and brewery news, catch up on the campaign and get involved with what we are doing – all over a pint of course. The venue this month is the Fat Cat on Alma Street, Kelham Island. Buses 47,48,53 and 87 stop nearby on Nursery Street, closest tram stop is Shalesmoor.

### Beer Capital Survey

**12pm Sat 5 Sep**

Our annual census of the beers on Sheffield's bars takes the form in a choice of pub crawls to take part in all over the City. Please see the article elsewhere regarding meeting points and routes.

### Pub of the Month

**8pm Tue 8 Sep**

Our September winner, as voted for by local members, is Shakespeare's on Gibraltar Street, off West Bar. Join us at the bar for a beer or two, see the certificate presented to Chris and the team and have a go on the bottled beer raffle. Buses 57,79,79A,81,82,84 and 85 stop outside the pub or tram stops at Cathedral or Shalesmoor are a short walk away.

### Saltaire Festival train trip

**11am Sat 12 Sep**

An annual beer festival hosted within Saltaire Brewery, we plan on enjoying the festival then stopping off to visit a few pubs and bars in Leeds on the way back.

Meet on board the Northern Rail train to Leeds (we change at Leeds for Saltaire) departing Dronfield station at 11:02 and Sheffield Station at 11:18.

Leeds Pubs Map available to download from our website.

### Heritage Open Days (guided pub walk)

**2pm Sun 13 Sep**

This event is a short walking tour around some of the entries in the Campaign for Real Ale (CAMRA) 'Yorkshire's Real Heritage Pubs' book. Also included are a number of 'try also' pubs which include aspects of architectural merit. NOW FULLY BOOKED.

### Festival planning meeting

**8pm Tue 15 Sep**

We continue to discuss arrangements for our annual Steel City Beer & Cider festival, which takes place this October at Kelham Island Industrial Museum.

The meeting venue is the New Barrack Tavern on Penistone Road, served by buses 53 and 79A (or Bamforth Street tram stop is a short walk away).

**The Red Deer**  
18 Pitt St S1 4DD 0114 2722890

9 lovingly kept cask ales  
home made food served daily  
square hole comedy  
unique quiz  
fantastic live music  
lively friendly atmosphere

Map labels: Portobello, Pitt Street, Charlotte Lane, West Street, Supertram-West Street, Ebbw Vale, Orange Street, George Street, Pitt Lane, Portland Lane, Pitt Close, Charlotte Lane, Supertram-West Street, Ebbw Vale, West Street, Ebbw Vale.

Social media icons: Facebook, Twitter, and a logo for 'BEER MATTERS'.



# The Angler's Rest

District Pub of the Year

5  
years

2011 - 2015!

**Graham & Beryl Yates.**

**Millers Dale, Buxton  
Derbyshire SK17 8SN**

**Tel: 01298 871323**

**[www.theanglersrest.co.uk](http://www.theanglersrest.co.uk)**

## The Junction

**Carlton St. Castleford WF10 1EE**

**Unique Multi-Award-Winning  
Traditional Pub**

**Ever changing range of guest real ales  
drawn from wooden casks**

- Friendly Atmosphere •
- Open Fires • Dogs Welcome •
- Light-Hearted Quiz on Wed at 8.50pm •
- Quality Bands most Fridays at 9pm •

### OPENING TIMES

**Monday & Tuesday 2pm – 9pm**

**Wednesday & Thursday 2pm – 11pm**

**Friday to Sunday 12.00 noon – 11pm**

**Tel: 01977 278867**

**Web:**

**[www.thejunctionpubcastleford.com](http://www.thejunctionpubcastleford.com)**

**Events:**

**[www.facebook.com/JunctionPubCas](http://www.facebook.com/JunctionPubCas)**

A poster for Real Ale Real Variety. It features two diagonal banners at the top: 'REAL ALE' and 'REAL VARIETY'. Below these are six color-coded boxes arranged in a 2x3 grid, each representing a different ale style: PALE ALE (light yellow), GOLDEN ALE (orange), BITTER (dark orange), BEST BITTER (dark red), MILD (dark brown), and PORTER / STOUT (black). At the bottom, there is a small text block and a footer with the website [WWW.CAMRA.ORG.UK](http://WWW.CAMRA.ORG.UK).

**REAL ALE**  
**REAL VARIETY**

PALE ALE GOLDEN ALE BITTER

BEST BITTER MILD PORTER / STOUT

Real ale comes in a multitude of colours, flavours and styles, from rich, dark porters to refreshing golden ales – there is a brew to suit all palates, moods and occasions.

GET REAL! ENJOY REAL ALE. [WWW.CAMRA.ORG.UK](http://WWW.CAMRA.ORG.UK)

## RambAle

11am Sun 20 Sep

Our monthly RambAle combining a pleasant walk in the countryside with a visit to a number of real ale pubs. This month will be in the Peak District and there is an option to combine the walk with a visit to the beer festival at the Old Hall Inn near Chinley. More details to be confirmed, check our website closer to the time.

## Beer Matters distribution & Committee meeting

8pm Tue 22 Sep

The committee discusses any business that needs to be decided ahead of the next branch meeting, also the October issue of *Beer Matters* should be available for distributors to collect, with all having a social pint together. The venue is the Rutland Arms on Brown Street in Sheffield Centre.

## Beer tasting night

8pm Tue 29 Sep

Our tasting panel nights focus on a specific local brewery and allow you to stop and think more about the flavours, aromas and carbonation of the beer, pull together our own tasting notes and rate the beer. The brewery and location is still to be confirmed, check our website closer to the time.

## Branch meeting

8pm Tue 6 Oct

Our usual monthly members meeting to share pub, club and brewery news, catch up on the campaign and get involved with what we are doing – all over a pint of course. The venue this month is the Hermitage on London Road near Moorfoot. Buses 20,20A,25,43,44,75,76,87,97 and 98 stop outside.

## Dronfield & District

Info and bookings: Nick Wheat  
(socials@dronfieldcamra.org.uk)

## Pub of the Season

Sat 29 Aug

Our Dronfield members have voted the Coach & Horses on Sheffield Road, Dronfield, as their Summer Pub of the Season. Join us for the certificate presentation and celebration at the pub where there as usual there will be a choice of great beers to enjoy. Bus 43 stops outside.

## Subbranch meeting

8pm Tue 8 Sep

Our usual monthly members meeting to share pub, club and brewery news, catch up on the campaign and get involved with what we are doing – all over a pint of course. The venue this month is the Royal Oak at Millthorpe. There is no public transport in Millthorpe in the evening, lifts from the centre of Dronfield can be arranged via Chairman Rob Barwell (see [www.dronfieldcamra.org.uk](http://www.dronfieldcamra.org.uk) for contact details).

## Beer Matters distribution

9pm Wed 23 Sep

If you have signed up as a distribution volunteer to take copies of *Beer Matters* to pubs around S18 please come down and collect your supply and have a pint with us whilst you are here! The venue this month is the Three Tuns on Cemetery Road.

## Subbranch meeting

8pm Tue 13 Oct

Our usual monthly members meeting to share pub, club and brewery news, catch up on the campaign and get involved with what we are doing – all over a pint of course. The venue this month is the Dronfield Arms on Chesterfield Road, bus 44 stops close to the pub or bus 43 stops a short walk away outside the fire station.

## The Committee

### Andrew Cullen

Chairman  
Beer Matters Editor  
[chairman@sheffieldcamra.org.uk](mailto:chairman@sheffieldcamra.org.uk)

### Louise Singleton

Vice Chairman  
Beer Festival Organiser  
[festival@sheffieldcamra.org.uk](mailto:festival@sheffieldcamra.org.uk)

### Kate Major

Secretary  
Press Officer  
Young Members Contact  
[secretary@sheffieldcamra.org.uk](mailto:secretary@sheffieldcamra.org.uk)

### Alan Gibbons

Pub of the Year and Good Beer  
Guide coordinator  
[potm@sheffieldcamra.org.uk](mailto:potm@sheffieldcamra.org.uk)

### Mike Humphrey

Membership Secretary  
[membership@sheffieldcamra.org.uk](mailto:membership@sheffieldcamra.org.uk)

### Mark Boardley

Pubs Campaign Coordinator  
[pubscampaign@sheffieldcamra.org.uk](mailto:pubscampaign@sheffieldcamra.org.uk)

### Paul Crofts

Pubs Database Officer  
[pubsofficer@sheffieldcamra.org.uk](mailto:pubsofficer@sheffieldcamra.org.uk)

### Dave Pickersgill

Pub Heritage  
[pubheritage@sheffieldcamra.org.uk](mailto:pubheritage@sheffieldcamra.org.uk)

### Phil Wood

Social Secretary  
[social@sheffieldcamra.org.uk](mailto:social@sheffieldcamra.org.uk)

### Rob Barwell

Dronfield Subbranch Chairman  
[chairman@dronfieldcamra.org.uk](mailto:chairman@dronfieldcamra.org.uk)

## CAMRA (National)

230 Hatfield Rd, St Albans, Herts, AL1 4LW  
[www.camra.org.uk](http://www.camra.org.uk)  
01727 867201

# A Campaign

# of Two Halves



## Join CAMRA Today

**Complete the Direct Debit form and you will receive 15 months membership for the price of 12 and a fantastic discount on your membership subscription.**

Alternatively you can send a cheque payable to CAMRA Ltd with your completed form, visit [www.camra.org.uk/joinus](http://www.camra.org.uk/joinus) or call **01727 867201**. All forms should be addressed to the: Membership Department, CAMRA, 230 Hatfield Road, St Albans, AL1 4LW.

### Your Details

Title \_\_\_\_\_ Surname \_\_\_\_\_

Forename(s) \_\_\_\_\_

Date of Birth (dd/mm/yyyy) \_\_\_\_\_

Address \_\_\_\_\_

Postcode \_\_\_\_\_

Email address \_\_\_\_\_

Tel No(s) \_\_\_\_\_

### Partner's Details (if Joint Membership)

Title \_\_\_\_\_ Surname \_\_\_\_\_

Forename(s) \_\_\_\_\_

Date of Birth (dd/mm/yyyy) \_\_\_\_\_

Email address (if different from main member) \_\_\_\_\_

Direct Debit Non DD

Single Membership £24 ☐ £26 ☐  
(UK & EU)

Joint Membership £29.50 ☐ £31.50 ☐  
(Partner at the same address)

For Young Member and other concessionary rates please visit [www.camra.org.uk](http://www.camra.org.uk) or call **01727 867201**.

I wish to join the Campaign for Real Ale, and agree to abide by the Memorandum and Articles of Association

I enclose a cheque for \_\_\_\_\_

Signed \_\_\_\_\_ Date \_\_\_\_\_

Applications will be processed within 21 days

01/15

## Campaigning for Pub Goers & Beer Drinkers

## Enjoying Real Ale & Pubs

**Join CAMRA today – [www.camra.org.uk/joinus](http://www.camra.org.uk/joinus)**



### Instruction to your Bank or Building Society to pay by Direct Debit

Please fill in the whole form using a ball point pen and send to:  
**Campaign for Real Ale Ltd, 230 Hatfield Road, St Albans, Herts AL1 4LW**

**Name and full postal address of your Bank or Building Society Service User Number**

To the Manager Bank or Building Society

Address

Postcode

**Name(s) of Account Holder**

**Bank or Building Society Account Number**

**Branch Sort Code**

**Reference**



This Guarantee should be detached and retained by the payer.

### The Direct Debit Guarantee

- This Guarantee is offered by all banks and building societies that accept instructions to pay by Direct Debit.
- If there are any changes to the amount, date or frequency of your Direct Debit The Campaign for Real Ale Ltd will notify you 10 working days in advance of your account being debited or as otherwise agreed. If you request The Campaign for Real Ale Ltd to collect a payment, confirmation of the amount and date will be given to you at the time of the request.
- If an error is made in the payment of your Direct Debit by The Campaign for Real Ale Ltd or your bank or building society you are entitled to a full and immediate refund of the amount paid from your bank or building society.
  - If you receive a refund you are not entitled to, you must pay it back when The Campaign for Real Ale Ltd asks you to.
- You can cancel a Direct Debit at any time by simply contacting your bank or building society. Written confirmation may be required. Please also notify us.

### FOR CAMPAIGN FOR REAL ALE LTD OFFICIAL USE ONLY

This is not part of the instruction to your Bank or Building Society

Membership Number

Name

Postcode

### Instructions to your Bank or Building Society

Please pay Campaigns For Real Ale Limited Direct Debits from the account detailed on this instruction subject to the safeguards assured by the Direct Debit Guarantee. I understand that this instruction may remain with Campaigns For Real Ale Limited and if so will be passed electronically to my Bank/Building Society.

Signature(s)

Date





# The Backroom

# The Greystones

## SEPTEMBER

## OCTOBER

FRIDAY 4TH

**Gig Tripper**  
Showcase for Local Bands

SATURDAY 5TH // £3

**Velco Teddy Bears**

SUNDAY 6TH // £10

**Warner E. Hodges**  
and Band supports  
Roaming Son and  
The Fargo Railroad Co.

TUESDAY 8TH // £6 ADV / £8 OTD

**The Rosellys** support  
Mat Wale & Friends

WEDNESDAY 9TH // £14

**The Delines**

FRIDAY 11TH // £10

**Si Cranstoun**

SATURDAY 12TH // £12

**John Otway & The  
Big Band**

THURSDAY 17TH // £10

**Anthony Snape**

FRIDAY 18TH // £12

**Tir Na Nog**  
SATURDAY 19TH // £12

**Stackridge**

...The Final Bow Tour

SUNDAY 20TH // £10

**Robin Williamson**

MONDAY 21ST // FREE

**Open Mic/Acoustic**

WEDNESDAY 23RD // £13 / £11 CONS

**Kris Drever &  
Ian Carr**

THURSDAY 24TH // £12

**The Nimmo Brothers**

FRIDAY 25TH // £12

**Lauren Housley**  
full band show + support

SATURDAY 26TH // £7

**The Mirror Crack'd  
Reunion 2015**

SUNDAY 27TH // £12

**Grainne Duffy**

THURSDAY 1ST // £16.50

**Martin Stephenson  
and The Daintees**

FRIDAY 2ND // £22

**Rich Robinson**

SATURDAY 3RD // £9

**Ruarri Joseph**

SUNDAY 4TH // £12

**Erja Lytinen**

MONDAY 5TH // FREE

**Open Mic/Acoustic**

WEDNESDAY 7TH // £15

**Steve Forbert**

THURSDAY 8TH

**John Reilly**

SUNDAY 11TH // £13

**Cregan & Co, The  
Rod Stewart Songbook**

TUESDAY 13TH // £14

**Simone Felice**

WEDNESDAY 14TH // £10

**Catfish Keith**

SUNDAY 18TH // £16.50

**John Bramwell**  
(I Am Kloot)

MONDAY 5TH // FREE

**Open Mic/Acoustic**

TUESDAY 20TH // £13 ADV / £11 CONS

**Roy Bailey's  
80th Birthday Bash!**

WEDNESDAY 21ST // £13

**Chantel McGregor**

THURSDAY 22ND // £10

**Blackbeards Tea Party**

TUESDAY 27TH // £15

**Spear Of Destiny**

WEDNESDAY 28TH // £12.50

**Session Americana**

THURSDAY 29TH // £17.50

**China Crisis**

SATURDAY 31ST // £12

**My Baby**